

# Using Keylab with Ableton 8 or 9

## Setting up your Keylab

### Update your firmware

The first step in making your Keylab work with Ableton Live is to make sure you have the latest firmware in your Keylab controller.

You can see your firmware version when you power up the Keylab.

Visit the page of your particular keyboard model at: <http://www.arturia.com> to get the latest firmware version.

*1.33 and above for Keylab 49/61*

*1.18 and above for Keylab 25*

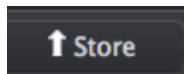
Make sure to read the directions and follow the steps **EXACTLY** to update your firmware and then **reset the unit by powering up holding down the octave up + octave down buttons.**

### Installing the Ableton Live preset into your Keylab

You will need to load a ABLETON LIVE controller map to have all the parameters work correctly.

To do this you will need to get the latest MIDI CONTROL CENTER UNIVERSAL software. It is a free download from the [www.arturia.com](http://www.arturia.com) web pages. Look under the **RESOURCES** pages for your model Keylab keyboard.

1. Connect KEYLAB to your computer
2. Boot up your MIDI CONTROL CENTER SOFTWARE
3. Click on the IMPORT button in the MCC software.
4. Find the file **Keylab xx-Live.keylabxx** that should be in the folder of files you downloaded.
5. Once you have loaded the preset it will show up in the TEMPLATES section of the screen.
6. Choose the MEMORY location that you want the ABLETON LIVE map to reside.
7. Now click on the STORE button.  
*You could also drag and drop the Live setup to the memory location you want in your Keylab.*



Your Keylab now has a MIDI map configured for use with Ableton Live. You can now shut down the MIDI Control Center software. Just load the Live Preset up when you want to use Ableton Live with your Keylab.

*Load the preset by pressing EDIT then Switch #2 ( RECALL) Use the VALUE dial to choose the preset number and then click the dial to load it.*

## Part 2: Installation and setup

1. Install the folder 'Arturia Keylab 49-61' into the folder:

Mac users

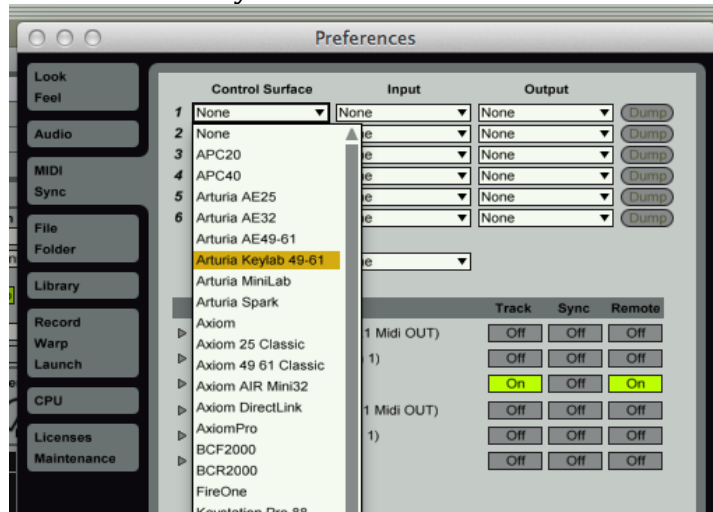
Macintosh HD/Users/(username)/library/preferences/Ableton/Live (latest version)/user remote scripts/

(in order to open this library simply hold ALT then go to finder "GO" menu and choose "library".

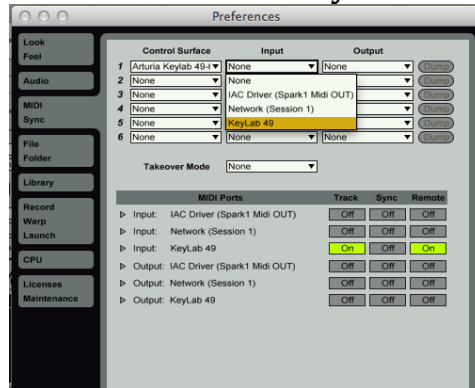
PC Users

C:\Users\ (username) \AppData\Roaming\Ableton\Live (latest version)\Preferences\User Remote Scripts\

2. Plug in your Keylab49 or Keylab 61 to a USB port.
3. Launch Ableton
4. Open the **Preferences** panel
5. Choose the **MIDI/Sync** tab
6. Select Arturia Keylab 49-61 from the list in under **Control Surface**



7. Now choose **Arturia Keylab 49** only in the input menu. Let output on **None**.



8. Choose Keylab 49 or 61 in the MIDI ports section as seen above. If you want to also have access to changing the mapping for a specific project, enable the REMOTE button as well.

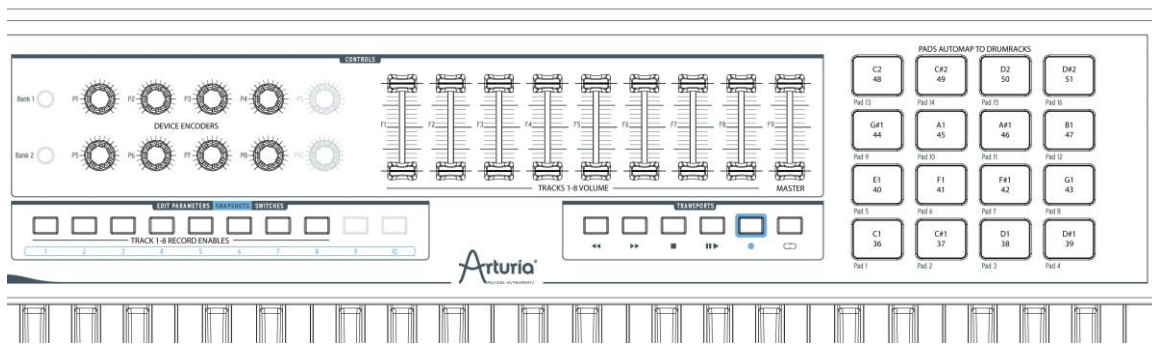
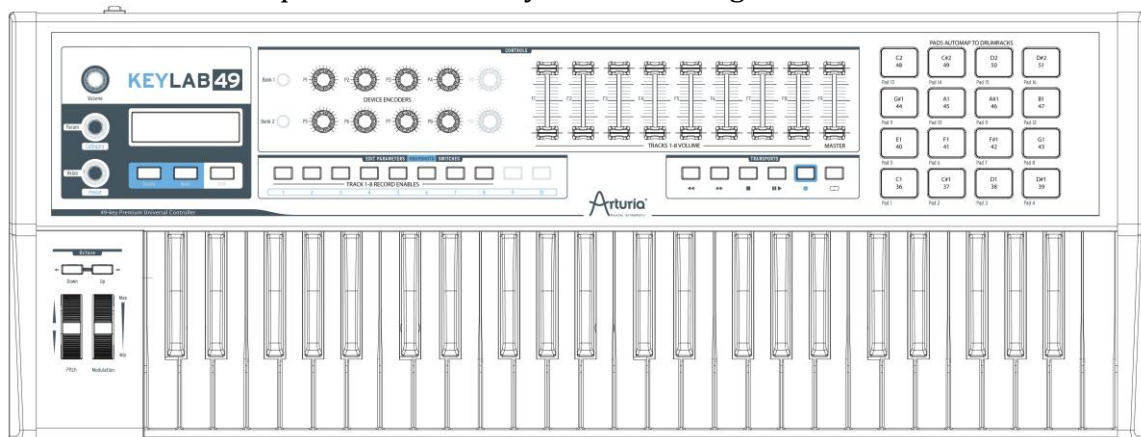
## Part 2: Using Keylab with Ableton

We have it setup so that the BANK 2 knobs and SLIDERS work with Live. This way you will still have the BANK 1 knobs and SLIDERS working with your Analog Lab software.

The mapping that we created for use with Ableton allows you the following:

- Control 16 pads in and Ableton Drumracks instrument – when you change the bank position the pads will automatically map to the right bank of pads.
- 8 knobs control the first 8 parameters that are assignable/pre-assigned in Live Devices
- 8 volume controls in the mixer
- Master Level
- 8 Track Record Arms using the assignable switches
- Transport controls - PLAY, STOP, RECORD, REWIND, FORWARD and LOOP on/off

You can see how the pads and knobs layout in the image below.



This zoomed image show the parameters that are and are not mapped.

### Other options:

You can always use the MIDI Learn function in Ableton override the controls here or make use of the buttons and knobs that are not used in the Ableton mapping.